

# The Texas A&M University System

COMPANY NAME \_\_\_\_\_  
 ADDRESS \_\_\_\_\_  
 CITY \_\_\_\_\_ STATE \_\_\_\_\_ ZIP \_\_\_\_\_  
 PHONE \_\_\_\_\_ FAX \_\_\_\_\_

Purchaser Patty Winkler  
 Info Contact p-winkler@tamu.edu 979-845-4556

## DEPARTMENT

Department 02LIBR  
 Bill-to-Address 750 Agronomy Road - Suite 3101  
 6000 TAMU  
 Attn: Email invoices to invoices@tamu.edu  
 Attn: Do not mail invoice if sending via email  
 College Station, TX 778436000  
 Ship-to-Address RECEIVING DEPT. LAMAR STREET  
 EVANS LIBRARY ANNEX  
 5000 TAMU  
 COLLEGE STATION, TX 778435000

## BID INFORMATION

|                    |   |                  |                    |
|--------------------|---|------------------|--------------------|
| Description        | Furniture for Re-Imaging Library  |                  |                    |
| Bulletin Desc.     |   |                  |                    |
| Bid Number         | AM02-17-B000833   | Bid Opening Date | 01/05/2017 2:00 PM |
| Bid Type           | Open Market   | Type Code        | Invitation for Bid |
| Alternate Id       | 67461AF   | Fiscal Year      | 2017               |
|                    |   | Available Date   | 12/22/2016 2:27 PM |
| Pre-Bid Conference |   |                  |                    |
| Attachments        | Furniture Specifications for B000833.pdf<br>Installation Terms and Conditions~7.pdf |                  |                    |

## AMENDMENTS

## ITEMS

| <u>Item</u> | <u>Description</u>     | <u>Quantity</u> | <u>Unit</u> | <u>Unit Price</u> | <u>Total</u> |
|-------------|------------------------|-----------------|-------------|-------------------|--------------|
| 22.000      | Attention All Bidders: | 0.00            |             |                   |              |

Texas A&M, Procurement Services is transitioning to an E-commerce system for all invitation for bids and purchase orders. We are asking all vendors to take a few moments and register as one of our vendors. This will allow you to respond to our bid invitations electronically as well as accept purchase orders.

Please visit the following website to register  
<https://buy.tamus.edu/bsol>

If you have any questions in reference to registrations, please contact us at vendorhelp@tamu.edu

As a bidder responding to this invitation upon submission of your response, regardless of the format of your submission, you and the entity you represent are agreeing to the terms and conditions presented here as well as the TAMU terms and conditions located at [http://purchasing.tamu.edu/media/123743/bid\\_tamu.pdf](http://purchasing.tamu.edu/media/123743/bid_tamu.pdf).

### Physical Address:

Texas A&M University  
 Procurement Services  
 Agronomy Road  
 College Station TX 77843-1477  
 Fax - 979-845-3800

NOTE: If responding manually, please submit with your bid response a W9. This will allow us to enter your company into our bid system and include your response on the electronic tabulation.

\*\*\*\*\*

# The Texas A&M University System

| <u>Item</u> | <u>Description</u>  | <u>Quantity</u> | <u>Unit</u> | <u>Unit Price</u> | <u>Total</u> |
|-------------|---|-----------------|-------------|-------------------|--------------|
|             | <p>Texas A&amp;M University is seeking pricing for the Furnish and Installation of the following furniture for the Re-Imagining Project for the Library located on the campus in College Station, TX. Upon award, all deliveries and installations will be coordinated with project contact. The project contact will be provided upon award.</p> <p>Texas A&amp;M University reserves the right to split the award between two or more vendors, depending on the best value for the university. Please quote your best price and delivery time.</p>  |                 |             |                   |              |
| 1.000       | <p>Ottoman (B1)</p> <p>Manufacturer: First Office</p> <p>Model: Boost; F49158-H1S-COM-COM</p> <p>Fully upholstered with optional casters</p> <p>25.75 DIA x 18.75 SH, 54" width</p> <p>Momentum Textiles pattern: SILICA color: GARNET - verify fabric quantity with pattern repeat</p>   | 2.00            | EA          |                   |              |
| 2.000       | <p>Computer Chair (C1a)</p> <p>Manufacturer: Haworth</p> <p>Model: Very Perforated-Back Conference Chair; SCC-3-3-0-5-COM-COM-TR-FJ-TR-07-TR-MC</p> <p>Armless</p> <p>DESCRIPTION: 21.8"W x 26.7"D x 36.9"H x 15.5"-20.5"SH</p> <p>High strength polymer seat and back with weight assisted recline mechanism and pneumatic height adjustment. Armless conference chair with flexing perforated back, painted plastic five star standard base with black hard casters (for carpet). With optional upholstered seat and back pad.</p> <p>METAL FINISH: Metallic Champagne, TR-MC</p> <p>SHELL FINISH: Slate TR-FJ</p> <p>TRIM FINISH: Fog TR-07</p> <p>SEAT &amp; BACK FABRIC: Mfg: Momentum Textiles</p> <p>Pattern Silica</p> <p>Color: Garnet</p> <p>Width: 54"</p> <p>Repeat: None</p> <p>Fabric Qty.: Verify fabric quantity with pattern repeat</p>  | 22.00           | EA          |                   |              |
| 3.000       | <p>Computer Chair (C1b)</p> <p>Manufacturer: Haworth</p> <p>Model: Very Perforated - Back Conference Chair; SCC-3-3-0-5-COM-COM-TR-FJ-TR-01-TR-MC</p> <p>Armless</p> <p>DESCRIPTION: 21.8"W x 26.7"D x 36.9"H x 15.5"-20.5"SH</p> <p>High strength polymer seat and back with weight assisted recline mechanism and pneumatic height adjustment. Armless conference chair with flexing perforated back, painted plastic five star standard base with black hard casters (for carpet).</p> <p>With optional upholstered seat and back pad.</p> <p>METAL FINISH: Metallic Champagne, TR-MC</p> <p>SHELL FINISH: Slate TR-FJ</p> <p>TRIM FINISH: Fog TR-07</p> <p>SEAT &amp; BACK FABRIC: Mfg: Pallas</p> <p>Pattern Deflect 27.236.082</p> <p>Color: Cashmere</p> <p>Width: 54"</p> <p>Repeat: 10.0625"V, 3.875"H</p> <p>Contents: 100% Polyurethane</p> <p>Abr. Res.: 100,000 double rubs</p> <p>Finish: Cleangene Technology</p> <p>Fabric Qty.: Verify fabric quantity with pattern repeat</p> | 24.00           | EA          |                   |              |
| 4.000       | <p>Study Chair (C3b)</p> <p>Manufacturer: Haworth</p> <p>Model: Very Perforated Back Seminar Chair; SCM-3-4-0-1-COM-COM-TR-FJ-TR-07-TR-MC</p> <p>Armless</p> <p>23.3"W x 22"D x 33.9"H x 18.2"SH</p> <p>High strength polymer seat and back with weight assisted recline mechanism. Armless chair with flexing perforated back, painted steel four leg frame with black hard casters (for</p>   | 4.00            | EA          |                   |              |

# The Texas A&M University System

| <u>Item</u> | <u>Description</u>   | <u>Quantity</u> | <u>Unit</u> | <u>Unit Price</u> | <u>Total</u> |
|-------------|--|-----------------|-------------|-------------------|--------------|
|             | carpet). With optional upholstered seat pad. Chair stacks 5 high on the floor and 8 high on a cart.<br><br>TRIM FINISH: Metallic Champagne, TR-MC<br>SHELL FINISH: Slate TR-FJ<br>TRIM FINISH: Fog TR-07<br>SEAT FABRIC: Mfg: Pallas<br>Pattern Deflect 27.236.155<br>Color: Bamboo<br>Width: 54"<br>Repeat: 10.0625"V, 3.875"H<br>Contents: 100% Polyurethane<br>Abr. Res.: 100,000 double rubs<br>Finish: Cleangene Technology<br>Fabric Qty.: Verify fabric quantity with pattern repeat.   |                 |             |                   |              |
| 5.000       | Study Chair (C3c)<br>Manufacturer: Haworth<br>Model: Very Perforated Back Seminar Chair; SCM-3-4-0-1-COM-COM-TR-FJ-TR-07-TR-MC<br>Armless<br>23.3"W x 22"D x 33.9"H x 18.2"SH<br>High strength polymer seat and back with weight assisted recline mechanism. Armless chair with flexing perforated back, painted steel four leg frame with black hard casters (for carpet). With optional upholstered seat pad. Chair stacks 5 high on the floor and 8 high on a cart.<br><br>TRIM FINISH: Metallic Champagne, TR-MC<br>SHELL FINISH: Slate TR-FJ<br>TRIM FINISH: Fog TR-07<br>SEAT FABRIC: Mfg: Pallas<br>Pattern Deflect 27.236.146<br>Color: Mineral<br>Width: 54"<br>Repeat: 10.0625"V, 3.875"H<br>Contents: 100% Polyurethane<br>Abr. Res.: 100,000 double rubs<br>Finish: Cleangene Technology<br>Fabric Qty.: Verify fabric quantity with pattern repeat  | 4.00            | EA          |                   |              |
| 6.000       | Stool (C7b)<br>Manufacturer: Herman Miller<br>Model: Sayl Task Stool; AS7SA-5-3-N-A-AJ-65-BB-63<br>Armless<br>24.75"W x 26"D x 42.5"-52.5"H x 23.5"-33.5"SH<br>Armless work stool with mid-back frameless 3D Intelligent suspension back with Y-Tower support. Upholstered seat with foam padding and passive Posturefit back support, tilt limiter and seat angle, adjustable seat depth, adjustable lumbar support, and five star base with 20" dia. trivalent chrome footrest. Stool to have carpet casters. 350 pound weight capacity.<br>BASE/Y-TOWER FINISH: 65 Fog with Studio White Y-Tower<br>BACK SUSPENSION FINISH: 63 Fog<br>SEAT FABRIC: Mfg: Herman Miller<br>Pattern Color Guard<br>Color: Black 3P14<br>Width: 54"<br>Repeat: None<br>Contents: 100% Vinyl, 88% Polyester & 12% Cotton Backing<br>Abr. Res.: 200,000 double rubs<br>Finish: None<br>Fabric Qty.: Verify fabric quantity with pattern repeat.<br>CASTERS: Carpet Casters (BB) | 1.00            | EA          |                   |              |
| 7.000       | Lounge Chair (L1)<br>Manufacturer: Coalesse<br>Model: Bob Lounge Swivel Chair; 216 - Special Quote: CL036640, REV 9998<br>Swivel<br>35"W X 34.25"D X 31.75"H X 17"SH<br>FINISH: Platinum Matte 4141 (SPECIAL)<br>Mfg: Maharam<br>Pattern Stature 466180  | 2.00            | EA          |                   |              |

# The Texas A&M University System

| <u>Item</u> | <u>Description</u>   | <u>Quantity</u> | <u>Unit</u> | <u>Unit Price</u> | <u>Total</u> |
|-------------|--|-----------------|-------------|-------------------|--------------|
|             | Color: Stealth 014<br>Width: 54"<br>Repeat: 9"V, 6.75"H<br>Contents: 100% Vinyl Face, 100% Polyester Back<br>Abr. Res.: 100,000 double rubs<br>Finish: Antimicrobial Ink-Resistant Protective Topcoat<br>Fabric Qty.: Verify fabric quantity with pattern repeat   |                 |             |                   |              |
| 8.000       | Banquette (L3)<br>Manufacturer: Agati<br>Model: Hampton Banquette; HMP-STG-90DEG-MLB-OPT-CASTERS-90DEG<br>48"W X 48"D X 36"H X 19"SH<br>SEAT FABRIC: Mfg: DL Couch, Source One<br>Pattern Huxley UHN-HX-13<br>Color: Lenina<br>Width: 54"<br>Repeat: 1.5"H, 1.5"V<br>Contents: 100% Vinyl Face, 100% Polyester Back<br>Abr. Res.: 350,000 double rubs<br>Finish: Stain Repellant<br>Fabric Qty.:<br>BACK FABRIC: Mfg: Momentum Textiles<br>Pattern Interim<br>Color: Potter<br>Verify fabric quantity with pattern repeat.<br>Verify fabric quantity with pattern repeat. Fabric to be railroaded. | 2.00            | EA          |                   |              |
| 9.000       | Lectern (LT1)<br>Manufacturer: Enwork<br>Model: Impression Articulating Lectern with Base Cabinet; LCL1PC-A-S-B<br>Articulating with base cabinet<br>24"W x 28"D x 34" - 46"H<br>20"W x 20"D x 25"H (Cabinet)<br>PULL: Arc, (A)<br>PAINT FINISH: Silver with white casters, (S)<br>LAMINATE FINISH: Wilsonart, Monticello Maple 7925-38 (B)  | 1.00            | EA          |                   |              |
| 10.000      | Power Tower (P1)<br>Manufacturer: Steelcase<br>Model: Thread Power Hub; PFLHUB-4799-LOUNGE-NEMA<br><br>METAL FINISH: Platinum Metallic 4799  | 2.00            | EA          |                   |              |
| 11.000      | Table (T1)<br>Manufacturer: Kimball<br>Model: Scenario Height Adjustable Mobile Table; 77K36RD30-L-P-TM-TM (Top); 77K2742XA-501 (Base)<br><br>LAMINATE & PVC EDGE: Huntington Maple TM<br>METAL FINISH: Platinum Metallic 501  | 2.00            | EA          |                   |              |
| 12.000      | Laptop Table (T2a)<br>Manufacturer: Harter<br>Model: Penny Oval Laptop Table; T69F14HA-LRC-U05-P06-CS<br>Mobile<br>LAMINATE: Pewter Mesh LRC<br>URETHANE EDGE: Otter U05<br>PAINTED METAL FRAME:<br>Plastic laminate oval top with urethane edge, height adjustable cast aluminum<br>base to be silver painted finish with casters.<br>Silver P06  | 2.00            | EA          |                   |              |
| 13.000      | Study Table (T7P)<br>Manufacturer: Kimball<br>Model: Priority Table<br>Legs: (2) 53K3628SLUESP<br>Top: 53K3672WBSL<br>Support Rail: 53K72SRUP<br>LAMINATE: Formica, Elemental Concrete, 8830-58<br>PVC EDGE: Storm 460   | 2.00            | EA          |                   |              |

# The Texas A&M University System

| <u>Item</u> | <u>Description</u>   | <u>Quantity</u> | <u>Unit</u> | <u>Unit Price</u> | <u>Total</u> |
|-------------|--|-----------------|-------------|-------------------|--------------|
|             | <p>METAL FINISH: Platinum Metallic 501</p> <p>POWER OPTION:</p> <p>Power Option</p> <p>Metal</p> <p>Wire Management</p> <p>PVC Edge</p> <p>Laminate Shown without power Casters</p> <p>Clear Wire Management Sleeve #99K36CMFC</p> <p>Factory installed single side pneu power grommet with 1 Duplex / 2 USB module #99KG26 in Silver Finish. Center in table.</p>   |                 |             |                   |              |
| 14.000      | <p>Computer Table (T16) - 1 Person</p> <p>Manufacturer: First Office</p> <p>Model: Staks Single Sided Table</p> <p>LEG FINISH: Luster Grey MSL</p> <p>LAMINATE TOP FINISH: Formica, Elemental Concrete, 8830-58</p> <p>EDGE FINISH: Platinum PN2</p> <p>Rectangular computer table with plastic laminate top and pvc edge. H-Leg supports with glides in luster grey finish, include necessary leg and worksurface supports. Provide vertebra cable manager in silver finish and cable basket wire manager below worksurface for equipment wire management.</p>  | 2.00            | EA          |                   |              |
| 15.000      | <p>Computer Table (T17P) - 4 Person</p> <p>Manufacturer: First Office</p> <p>Model: Staks Benching Double Sided Table</p> <p>(4) 72"W x 22"D x 29"H, Overall: 144"W x 48.18"D</p> <p>Clamp-On Power unit one per table, two on each side of privacy panel. Provide a total of (4). Provide duplex receptacles and daisy chain underneath surface. Rectangular computer table with plastic laminate top and pvc edge. H-Leg supports with glides in luster grey finish, include necessary leg and worksurface supports. Table to have surface mounted clamp-on power unit with 2 Power/2 USB (1 per side on each table top). Provide 8-Wire electrical system to provide two power duplexes per person, daisy chain tables as required for one point of connection into floor box thru vertebra cable manager in silver finish, cable basket wire manager below worksurface. 12" high frosted acrylic privacy panels mounted to tool kit</p> <p>LEG FINISH: Luster Grey MSL</p> <p>LAMINATE TOP FINISH: Formica, Elemental Concrete, 8830-58</p> <p>EDGE FINISH: Platinum PN2</p> <p>PRIVACY PANEL: Frosted Acrylic 12"H</p> <p>OPTIONS: Clamp-On Power unit one per table, two on each side of privacy panel. Provide Wire Basket Management</p> <p>PVC Edge Power on Worksurface</p> <p>Laminate Privacy Panel Vertebra Mgr</p> | 1.00            | EA          |                   |              |
| 16.000      | <p>Computer Table (T18P)- 6 Person</p> <p>Manufacturer: First Office</p> <p>Model: Staks Benching Double Sided Table</p> <p>DESCRIPTION: (6) 36"W x 22"D x 29"H, Overall: 108"W x 48.18D</p> <p>Rectangular computer table with plastic laminate top and pvc edge. H-Leg supports with glides in luster grey finish, include necessary leg and worksurface supports. Table to have surface mounted clamp-on power unit with 2 Power/2 USB (1 per side on each table top). Provide 8-Wire electrical system to provide two power duplexes per person, daisy chain tables as required for one point of connection into floor box thru vertebra cable manager in silver finish, cable basket wire manager below worksurface. 12" high frosted acrylic privacy panels mounted to special size tool kit.</p> <p>LEG FINISH: Luster Grey MSL</p> <p>LAMINATE TOP FINISH: Formica, Elemental Concrete, 8830-58</p> <p>EDGE FINISH: Platinum PN2</p> <p>PRIVACY PANEL: Frosted Acrylic</p> <p>OPTIONS:</p> <p>Wire Basket Management</p> <p>Metal Finish</p> <p>PVC Edge Power on Worksurface</p> <p>Laminate Privacy Panel Vertebra Mgr</p>   | 2.00            | EA          |                   |              |

# The Texas A&M University System

| <u>Item</u> | <u>Description</u>  | <u>Quantity</u> | <u>Unit</u> | <u>Unit Price</u> | <u>Total</u> |
|-------------|---|-----------------|-------------|-------------------|--------------|
|             | Clamp-On Power unit one per table, three on each side of privacy panel.<br>Provide a total of (6). Provide for daisy chaining. Provide duplex receptacles and daisy chain underneath surface.   |                 |             |                   |              |
| 17.000      | Computer Table (T33PA) - Single ADA<br>Manufacturer: Media Technologies<br>Model: WCT Workspace ADA Single Computer Table with Monitor Garage<br>Table: WCT-C3037-32 (Special Height) Monitor Garage: FMG-23<br>Power: ACUS-2P4U-120-TBD<br>DESCRIPTION: 37"L x 30"D x 32"H Garage: 23.25"W<br>Plastic laminate worksurface with pvc edge and custom height steel end frames and fixed modesty panel with integral wire management channel and wire grommet. Provide (1) flipping monitor garage with black lid with keyboard tray actuated release opening and positive latch. Provide (1) Charge Up single power access, in-surface, flip up with (2) Power/(2) USB Ports and 12' cord, finish in black. ACUS-2P4U-120-B, Charge Up single power access, in-surface, flip up with (2) Power/(2) USB Ports and 12' cord, finish in black.<br>BASE FINISH: Silver, 809<br>POP-UP FINISH: Black<br>LAMINATE FINISH: Formica, Elemental Concrete, 8830-58<br>PVC FINISH: Dove Grey<br>OPTIONS:<br>NOTE:<br>PVC Edge<br>Metal Finish Power Module<br>Plastic Laminate Shown as a double Monitor Garage | 1.00            | EA          |                   |              |
| 18.000      | Computer Table (T34P) - Double<br>Manufacturer: Media Technologies<br>Model: WCT Workspace Double Computer Table with Monitor Garage<br>Table: WCT-C3072-3-29<br>Monitor Garage: (2) FMG-23<br>Power: (2) ACUS-2P4U-120-TBD<br>DESCRIPTION: 72"L x 30"D x 29"H Garage: 23.25"W Plastic laminate worksurface with pvc edge and standard steel intermediate and end frames, fixed modesty panel with integral wire management channel and wire grommet. Provide (2) flipping monitor garage with black lid with keyboard tray actuated release opening and positive latch. Provide (2) Charge Up single power access, in-surface, flip up with (2) Power/(2) USB Ports and 12' cord, finish in black.<br>BASE FINISH: Silver, 809<br>POP-UP FINISH: Black<br>LAMINATE FINISH: Formica, Elemental Concrete, 8830-58<br>PVC FINISH: Dove Grey<br>OPTIONS: ACUS-2P4U-120-B, Charge Up single power access, in-surface, flip up with (2)<br>Power/(2) USB Ports and 12' cord,   | 1.00            | EA          |                   |              |
| 19.000      | Computer Table (T35P) - Triple<br>Manufacturer: Media Technologies<br>Model: WCT Workspace Triple Computer Table with Monitor Garage<br>Table: WCT-C30105-4-29<br>Monitor Garage: (3) FMG-23<br>Power: (3) ACUS-2P4U-120-TBD<br>DESCRIPTION: 105"L x 30"D x 29"H Garage: 23.25"W<br>Plastic laminate worksurface with pvc edge and standard steel two intermediate and end frames, fixed modesty panel with integral wire management channel and wire grommet. Provide (3) flipping monitor garage with black lid with keyboard tray actuated release opening and positive latch. Provide (3) Charge Up single power access, in-surface, flip up with (2) Power/(2) USB Ports and 12' cord, finish in black.<br>BASE FINISH: Silver, 809  | 7.00            | EA          |                   |              |

# The Texas A&M University System

| <u>Item</u> | <u>Description</u>   | <u>Quantity</u> | <u>Unit</u> | <u>Unit Price</u> | <u>Total</u> |
|-------------|--|-----------------|-------------|-------------------|--------------|
|             | POP-UP FINISH: Black<br>LAMINATE FINISH: Formica, Elemental Concrete, 8830-58<br>PVC FINISH: Dove Grey<br><br>OPTIONS: ACUS-2P4U-120-B, Charge Up single power access, in-surface, flip up with (2) Power/(2) USB Ports and 12' cord, finish to be black.  |                 |             |                   |              |
| 20.000      | Trash Receptacle (TR1) - Atlas Large<br>Manufacturer: Nevins<br>Model: Atlas Radius Large; F2041-2436-FMS6<br>DESCRIPTION: 24"W x 24"D x 36"H<br>Molded fiberglass two piece single radius square trash receptacle with one piece lift off top, 17" diameter hole, rigid plastic liner and raised 1.5" from floor. Unit is fade resistant/UV Protection and waterproofed, resistant to corrosion and temperature changes. 56 gallon capacity.<br>Provide optional custom decal in white letters, TRASH ONLY<br>FINISH: Metallic Suede, Steel FMS6<br>DECAL OPTION: TRASH ONLY, White Letters   | 2.00            | EA          |                   |              |
| 21.000      | Recycling Trash Receptable (TR2)<br>Manufacturer: Nevins<br>Model: Commodore Recycling Receptacle; F2060-3628-FMS6<br>Description: 36"W x 16"D x 28"H<br>Molded fiberglass two piece flat lid 3-bin trash receptacle with one-piece lift off top, individual rigid plastic liner for each opening and raised 1.5" from floor. Unit is fade resistant/UV Protection and waterproofed, resistant to corrosion and temperature changes. 15 gallon capacity per opening.<br>Provide custom optional decals in white letters, see below.<br><br>FINISH: Metallic Suede, Steel FMS6<br>DECAL OPTION: ALUMINUM / PLASTIC ONLY, White Letters (5" Dia. Opening, Left Facing)<br>PAPER ONLY, White Letters (9" Dia. Opening, Right Facing)<br>LARGE CARDBOARD ONLY, White Letters (12" W x 2.5"D Opening, Center Facing)  | 1.00            | EA          |                   |              |
| 23.000      | Installation, as per the attached terms and conditions   | 1.00            | LOT         |                   |              |
| 24.000      | Note to Bidders:<br><br>Texas A&M University reserves the right to split the award between two or more vendors, depending on best value for the University. Please quote best price and delivery time.<br><br>Pricing:<br><br>Bidders must indicate any additional charges not listed here-in.<br><br>References:<br><br>Bidders shall provide at least three (3) references where services comparable in size and scope have been performed within the last two (2) years. Bidders shall provide the Company name, Contact Person, Company Address, phone and fax number and email for each reference.<br><br>Texas A&M University reserves the right to contact these references to verify bidder's ability to perform these services. A negative reference may be grounds for disqualification of your bid.<br><br>Payment Terms:<br><br>Quote 100% Net 30 Upon Receipt and Acceptance. If quoting as specified, type "Agreed" in the required field. If quoting otherwise, indicate here-in. _____(required field) | 0.00            |             |                   |              |

# The Texas A&M University System

| <u>Item</u> | <u>Description</u> | <u>Quantity</u> | <u>Unit</u> | <u>Unit Price</u> | <u>Total</u> |
|-------------|--------------------|-----------------|-------------|-------------------|--------------|
|-------------|--------------------|-----------------|-------------|-------------------|--------------|

Shipping Terms:

Quote Destination Freight Prepaid and Allowed. If quoting as specified, type "Agreed" in the required field. If quoting otherwise, indicate here-in and provide estimated shipping cost.  
 \_\_\_\_\_(required field)

Delivery Terms: Quote delivery time, upon receipt of order  
 \_\_\_\_\_(required field)

Award

The award shall be made based on the following "Best Value Criteria". Texas A&M reserves the right to consider the following and any other factor deemed necessary to evaluate the offer and determine the "Best Value" for the University.

- Vendor's ability to meet the minimum specifications;
- Delivery requirement;
- Experience/past experience with vendor;
- The quality, availability and adaptability of equipment offered to required application.
- Quality of performance of previous services;
- Minimum order;
- References;
- The acquisition price.

Texas A&M University reserves the right to accept or reject any or all bids, to waive in formalities and technicalities, to accept the offer considered the most advantageous to the University.



**Note:** All images are for reference only. Refer to product specifications for actual requirements.

**ITEM NO.:** B1

**ITEM:** Ottoman

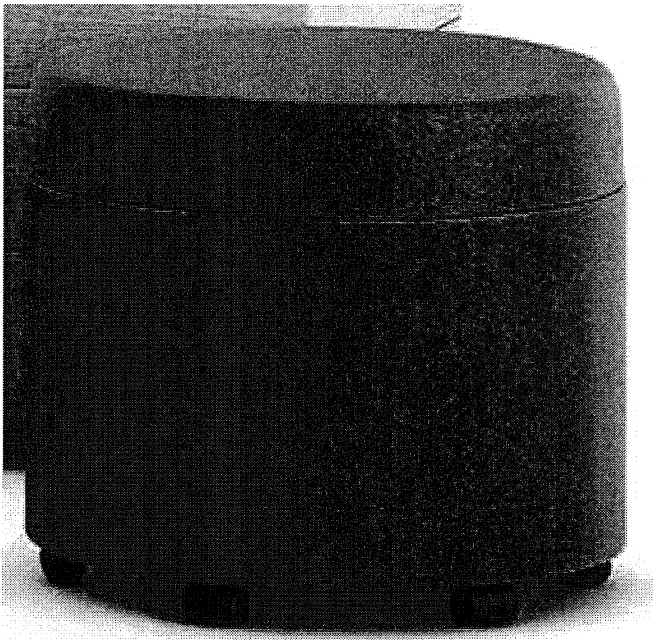
**LOCATION:** A1 - Collection 3.116                      E2 - Student Study 1.210  
E2 - Student Study 1.202

**MANUFACTURER:** First Office

**MODEL NUMBER:** Boost  
F49158-H1S-COM-COM

**DESCRIPTION:** 25.75"Dia. X 18.75" SH  
Fully upholstered ottoman with optional casters.

|                               |                     |  |
|-------------------------------|---------------------|--|
| <b>TOP &amp; SIDE FABRIC:</b> | <b>Mfg:</b>         | Momentum Textiles                          |
|                               | <b>Pattern</b>      | Silica                                     |
|                               | <b>Color:</b>       | Garnet                                     |
|                               | <b>Width:</b>       | 54"  |
|                               | <b>Repeat:</b>      | None                                       |
|                               | <b>Contents:</b>    | 51% Silicone, 49% PLA                      |
|                               | <b>Abr. Res.:</b>   | 365,000 double rubs                        |
|                               | <b>Finish:</b>      | NA   |
|                               | <b>Fabric Qty.:</b> | Verify fabric quantity with pattern repeat |



Shown with storage

**ITEM NO.:** C1a

**ITEM:** Computer Chair - Armless

**LOCATION:** A1 - Public Space 3.101 E2 - Student Study 1.210  
E2 - MAPS/GIS DEPART. 1.212 E2 - Library Multi-Purpose 1.210A

**MANUFACTURER:** Haworth

**MODEL NUMBER:** Very Perforated-Back Conference Chair  
SCC - 3 - 3 - 0 - 5 - COM - COM - TR-FJ - TR-07 - TR-MC

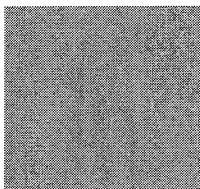
**DESCRIPTION:** 21.8"W x 26.7"D x 36.9"H x 15.5"-20.5"SH  
High strength polymer seat and back with weight assisted recline mechanism and pneumatic height adjustment. Armless conference chair with flexing perforated back, painted plastic five star standard base with black hard casters (for carpet). With optional upholstered seat and back pad.

**METAL FINISH:** Metallic Champagne, TR-MC

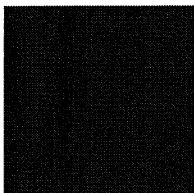
**SHELL FINISH:** Slate TR-FJ

**TRIM FINISH:** Fog TR-07

**SEAT & BACK FABRIC:** Mfg: Momentum Textiles  
Pattern: Silica  
Color: Garnet  
Width: 54"  
Repeat: None  
Contents: 51% Silicone, 49% PLA  
Abr. Res.: 365,000 double rubs  
Finish: NA  
Fabric Qty.: Verify fabric quantity with pattern repeat



Metal



Shell



ITEM NO.: C1b

ITEM: Computer Chair - Armless

LOCATION: A1 - Instruction 3.114  
A4 -Print Area 3.404  
A4 - Instruction 3.405A  
A4 - Instruction 3.405B  
A4 - Instruction 3.405  
A4 - Media Studio 3.424  
A4 - Sound Editing 3.424C  
A4 - Sound Editing 3.424D  
E1 - Consult 1.102B  
E1 - Work Area 1.102E  
E2 - Consult 1.210N

MANUFACTURER: Haworth

MODEL NUMBER: Very Perforated-Back Conference Chair  
SCC - 3 - 3 - 0 - 5 - COM - COM - TR-FJ - TR-07 - TR-MC

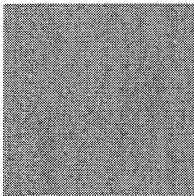
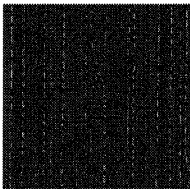
DESCRIPTION: 21.8"W x 26.7"D x 36.9"H x 15.5"-20.5"SH  
High strength polymer seat and back with weight assisted recline mechanism and pneumatic height adjustment. Armless conference chair with flexing perforated back, painted plastic five star standard base with black hard casters (for carpet). With optional upholstered seat and back pad.

METAL FINISH: Metallic Champagne, TR-MC

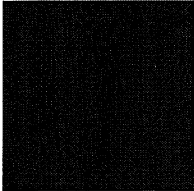
SHELL FINISH: Slate TR-FJ

TRIM FINISH: Fog TR-07

SEAT & BACK FABRIC: Mfg: Pallas  
Pattern Deflect 27.236.082  
Color: Cashmere  
Width: 54"  
Repeat: 10.0625"V, 3.875"H  
Contents: 100% Polyurethane  
Abr. Res.: 100,000 double rubs  
Finish: Cleangene Technology  
Fabric Qty.: Verify fabric quantity with pattern repeat



Metal



Shell



ITEM NO.: C3b

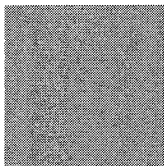
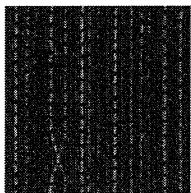
ITEM: Study Chair - Armless

LOCATION: A1 - Collection 3.116  
A4 - Study Room 3.407  
A4 - Study Room 3.409  
A4 - Study Room 3.411  
E2 - Student Study 1.202  
E2 - MAPS/GIS Dept 1.212  
E2 - Student Study 1.210  
E2 - Ex Study Rm 1.210C  
E2 - Ex Study Rm 1.210E  
E2 - Ex Study Rm 1.210G  
E2 - Group Study Rm 1.210J

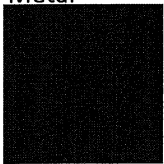
MANUFACTURER: Haworth  
MODEL NUMBER: Very Perforated Back Seminar Chair  
SCM - 3 - 4 - 0 - 1 - COM - COM - TR-FJ - TR-07 - TR-MC

DESCRIPTION: 23.3"W x 22"D x 33.9"H x 18.2"SH  
High strength polymer seat and back with weight assisted recline mechanism. Armless chair with flexing perforated back, painted steel four leg frame with black hard casters (for carpet). With optional upholstered seat pad. Chair stacks 5 high on the floor and 8 high on a cart.

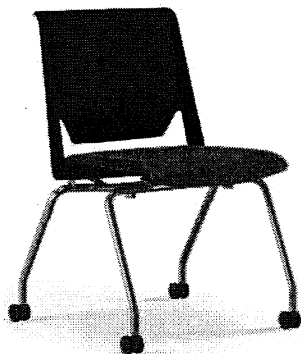
TRIM FINISH: Metallic Champagne, TR-MC  
SHELL FINISH: Slate TR-FJ  
TRIM FINISH: Fog TR-07  
SEAT FABRIC: Mfg: Pallas  
Pattern Deflect 27.236.155  
Color: Bamboo  
Width: 54"  
Repeat: 10.0625"V, 3.875"H  
Contents: 100% Polyurethane  
Abr. Res.: 100,000 double rubs  
Finish: Cleangene Technology  
Fabric Qty.: Verify fabric quantity with pattern repeat



Metal



Shell



ITEM NO.: C3c

ITEM: Study Chair - Armless

LOCATION: A1 - Collection 3.116  
A4 - Study Room 3.408  
A4 - Study Room 3.410  
E2 - Student Study 1.202  
E2 - MAPS/GIS Dept 1.212  
E2 - Student Study 1.210  
E2 - Ex Study Rm 1.210D  
E2 - Ex Study Rm 1.210F  
E2 - Group Study Rm 1.210K  
E2 - Service Desk 1.202D  
E2 - Open Office 1.212B

MANUFACTURER: Haworth

MODEL NUMBER: Very Perforated Back Seminar Chair  
SCM - 3 - 4 - 0 - 1 - COM - COM - TR-FJ - TR-07 - TR-MC

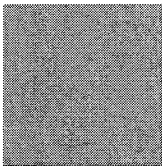
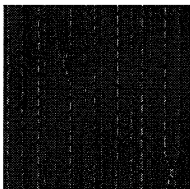
DESCRIPTION: 23.3"W x 22"D x 33.9"H x 18.2"SH  
High strength polymer seat and back with weight assisted recline mechanism. Armless chair with flexing perforated back, painted steel four leg frame with black hard casters (for carpet). With optional upholstered seat pad. Chair stacks 5 high on the floor and 8 high on a cart.

TRIM FINISH: Metallic Champagne, TR-MC

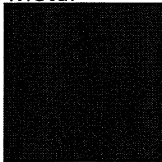
SHELL FINISH: Slate TR-FJ

TRIM FINISH: Fog TR-07

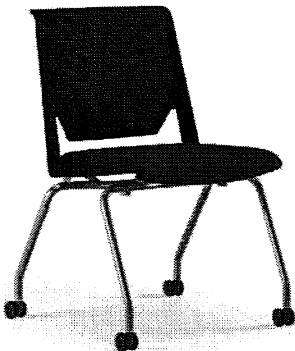
SEAT FABRIC: Mfg: Pallas  
Pattern Deflect 27.236.146  
Color: Mineral  
Width: 54"  
Repeat: 10.0625"V, 3.875"H  
Contents: 100% Polyurethane  
Abr. Res.: 100,000 double rubs  
Finish: Cleangene Technology  
Fabric Qty.: Verify fabric quantity with pattern repeat



Metal



Shell



ITEM NO.: C7b

ITEM: Stool - Armless


|           |                         |                                  |
|-----------|-------------------------|----------------------------------|
| LOCATION: | A1 - Instruction 3.114  | A4 - Instruction 3.405C          |
|           | A4 - Instruction 3.405  | A4 - Instruction 3.405D          |
|           | A4 - Instruction 3.405A | E2 - Library Multipurpose 1.210A |
|           | A4 - Instruction 3.405B | E2 - Maps Instruction 1.202B     |
|           |                         | E2 - Processing Room 1.212A      |

MANUFACTURER: Herman Miller  
MODEL NUMBER: Sayl Task Stool  
AS7SA-5-3-N-A-AJ-65-BB-63

DESCRIPTION: 24.75"W x 26"D x 42.5"-52.5"H x 23.5"-33.5"SH

Armless work stool with mid-back frameless 3D Intelligent suspension back with Y-Tower support. Upholstered seat with foam padding and passive Posturefit back support, tilt limiter and seat angle, adjustable seat depth, adjustable lumbar support, and five star base with 20" dia. trivalent chrome footrest. Stool to have carpet casters. 350 pound weight capacity.

BASE/Y-TOWER FINISH: 65 Fog with Studio White Y-Tower  
BACK SUSPENSION FINISH: 63 Fog

|   |              |  |
|---|--------------|--|
| SEAT FABRIC:  | Mfg:         | Herman Miller                                  |
|  | Pattern      | Color Guard                                    |
|   | Color:       | Black 3P14                                     |
|   | Width:       | 54"  |
|   | Repeat:      | None   |
|   | Contents:    | 100% Vinyl, 88% Polyester & 12% Cotton Backing |
|   | Abr. Res.:   | 200,000 double rubs                            |
|   | Finish:      | None   |
|   | Fabric Qty.: | Verify fabric quantity with pattern repeat.    |

CASTERS: Carpet Casters (BB)



**ITEM NO.:** L1

**ITEM:** Lounge Chair

**LOCATION:** A1 - Collection 3.116  
A4 - Ante Room 3.419  
E1 - Reference 1.102A

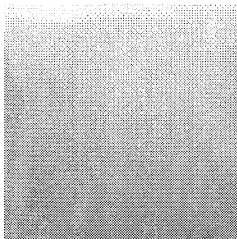
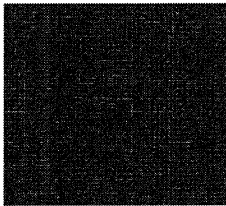
**MANUFACTURER:** Coalesse

**MODEL NUMBER:** Bob Lounge Swivel Chair  
216  
Special Quote: CL036640, REV 9998

**DESCRIPTION:** 35"W X 34.25"D X 31.75"H X 17"SH  
Fully upholstered lounge swivel chair with glides and custom platinum matte base.

**FINISH:** Platinum Matte 4141 (SPECIAL)

**FABRIC:** Mfg: Maharam  
Pattern: Stature 466180  
Color: Stealth 014  
Width: 54"  
Repeat: 9"V, 6.75"H  
Contents: 100% Vinyl Face, 100% Polyester Back  
Abr. Res.: 100,000 double rubs  
Finish: Antimicrobial Ink-Resistant Protective Topcoat  
Fabric Qty.: Verify fabric quantity with pattern repeat



Metal Finish

**ITEM NO.:** L3

**ITEM:** Banquette

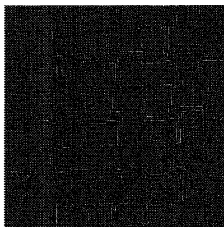
**LOCATION:** A1 - Collection 3.116

**MANUFACTURER:** Agati

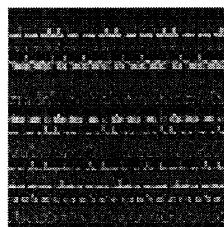
**MODEL NUMBER:** Hampton Banquette  
HMP-STG-90DEG-MLB-OPT-CASTERS-90DEG  
Quote #: 16-0513-3876

**DESCRIPTION:** 48"W X 48"D X 36"H X 19"SH  
Curved banquette with 90 degree curve with two tone upholstered cushioned seat and back, with optional casters.

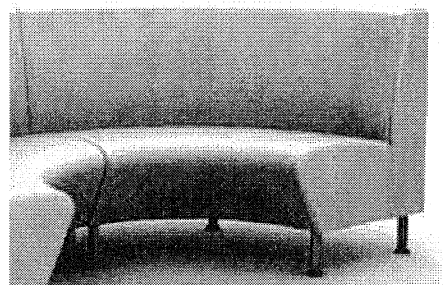
**SEAT FABRIC:** Mfg: DL Couch, Source One  
Pattern: Huxley UHN-HX-13  
Color: Lenina  
Width: 54"  
Repeat: 1.5"H, 1.5"V  
Contents: 100% Vinyl Face, 100% Polyester Back  
Abr. Res.: 350,000 double rubs  
Finish: Stain Repellant  
Fabric Qty.: Verify fabric quantity with pattern repeat.



**BACK FABRIC:** Mfg: Momentum Textiles  
Pattern: Interim  
Color: Potter  
Width: 54"  
Repeat: 26.25"L, 7"V  
Contents: 67% Cotton, 33% Nylon  
Abr. Res.: 95,000 double rubs  
Finish: Incase fabric Protection  
Fabric Qty.: Verify fabric quantity with pattern repeat. Fabric to be railroaded.



Shown un-railroaded



Shown without casters



**ITEM NO.:** LT1

**ITEM:** Lectern

**LOCATION:** A1 - Instruction 3.114  
A4 - Instruction 3.405  
A4 - Instruction 3.405A  
A4 - Instruction 3.405B  
A4 - Instruction 3.405C  
A4 - Instruction 3.405D  
E2 - Library Multipurpose 1.210A  
E2 - Maps Instruction 1.202B

**MANUFACTURER:** Enwork

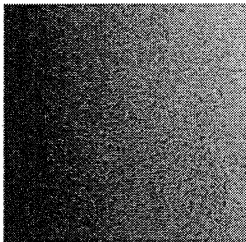
**MODEL NUMBER:** Impression Articulating Lectern with Base Cabinet  
LCL1PC-A-S-B  
Quote #: 65002-B

**DESCRIPTION:** 24"W x 28"D x 34" - 46"H  
20"W x 20"D x 25"H (Cabinet)  
Plastic laminate articulating pneumatic adjustable lectern with basic cabinet and casters. Top has 2 positions, flat and inclined. Cabinet has one adjustable shelf and arc pull, provide lock on cabinet.

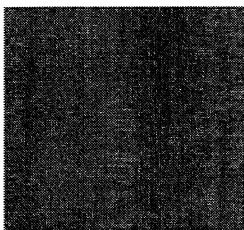
**PULL:** Arc, (A)

**PAINT FINISH:** Silver with white casters, (S)

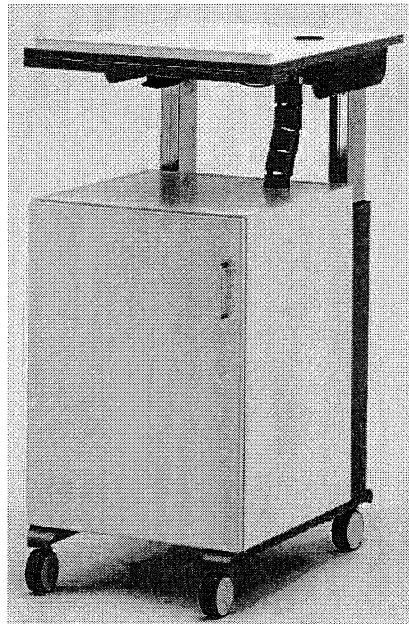
**LAMINATE FINISH:** Wilsonart, Monticello Maple 7925-38 (B)



Metal Finish



Plastic Laminate



**ITEM NO.:** P1

**ITEM:** Power Tower

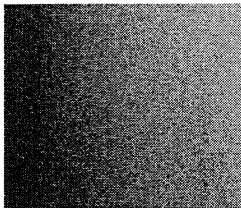
**LOCATION:** A1 - Collection 3.116

**MANUFACTURER:** Steelcase

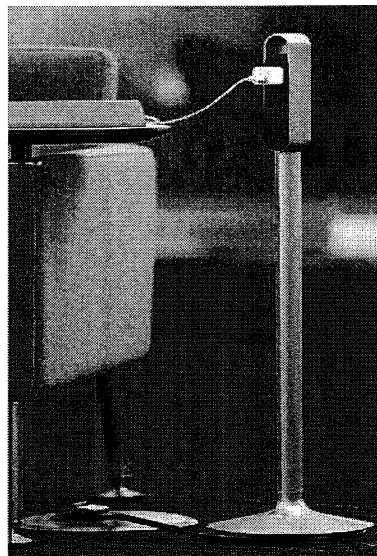
**MODEL NUMBER:** Thread Power Hub  
PFLHUB-4799-LOUNGE-NEMA

**DESCRIPTION:** 8" Dia. X 30"H  
Power hub includes six standard three-prong receptacles at seated height with integrated power wrap and 5' NEMA plug. The power hub includes a circuit breaker with reset button in the base if the hub exceeds 15 amps. Base is weighted.

**METAL FINISH:** Platinum Metallic 4799



Metal Finish



**ITEM NO.:** T1

**ITEM:** Table - Height Adjustable/Mobile

**LOCATION:** A1 - Collection 3.116  
A4 - North Corridor 3.403  
E2 - Student Study 1.202

E2 - Student Study 1.210

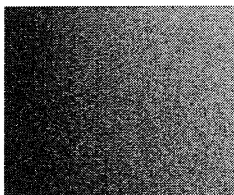
**MANUFACTURER:** Kimball

**MODEL NUMBER:** Scenario Height Adjustable Mobile Table  
77K36RD30-L-P-TM-TM (Top)  
77K2742XA-501 (Base)

**DESCRIPTION:** 36"Dia.x 25.5"- 41.875"H  
Round table with plastic laminate top and matching pvc edge. Height adjustable mobile base with release paddle to adjust height, four locking casters and platinum metallic finish.

**LAMINATE & PVC EDGE:** Huntington Maple TM

**METAL FINISH:** Platinum Metallic 501



Metal



Laminate



ITEM NO.: T2a

ITEM: Laptop Table - Mobile

LOCATION: A1 - Collection 3.116  
A4 - North Corridor 3.403  
E1 - Reference 1.102A  
E2 - Student Study 1.202

E2 - Student Study 1.210  
E2 - Consult Room 1.210N

MANUFACTURER: Harter

MODEL NUMBER: Penny Oval Laptop Table  
T69F14HA-LRC-U05-P06-CS

DESCRIPTION: 20"W x 15"D x 27.75"-37.75"H  
Plastic laminate oval top with urethane edge, height adjustable cast aluminum base to be silver painted finish with casters.

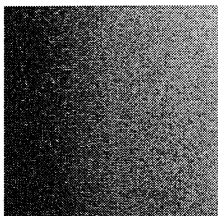
LAMINATE: Pewter Mesh LRC

URETHANE EDGE: Otter U05

PAINTED METAL FRAME: Silver P06



Urethane



Metal



Laminate



ITEM NO.: T7P

P: Denotes Power in Table

ITEM: Study Table - 4 Person

LOCATION: A1 - Collection 3.116  
A4 - Study Room 3.407  
A4 - Study Room 3.408  
A4 - Study Room 3.409

A4 - Study Room 3.410  
A4 - Study Room 3.411

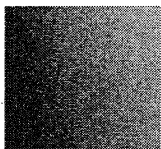
MANUFACTURER: Kimball

MODEL NUMBER: Priority Table  
Legs: (2) 53K3628SLUESP  
Top: 53K3672WBSL  
Support Rail: 53K72SRUP

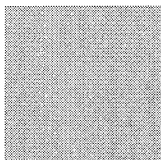
DESCRIPTION: 72"W x 36"D x 29"H  
Plastic Laminate Table Top, P 1/8" Molded PVC Edge, U-Shape Legs, Support Rail Set under worksurface in 501 Platinum Metallic finish. Provide clear wire management sleeve, 1 Power / 2 USB Unit. Provide 4" x 5" cutout to fit 99KG26, center of work surface.

LAMINATE: Formica, Elemental Concrete, 8830-58  
PVC EDGE: Storm 460  
METAL FINISH: Platinum Metallic 501

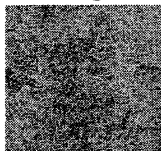
POWER OPTION: Clear Wire Management Sleeve #99K36CMFC  
Factory installed single side pneu power grommet with 1 Duplex / 2 USB module #99KG26 in Silver Finish. Center in table.



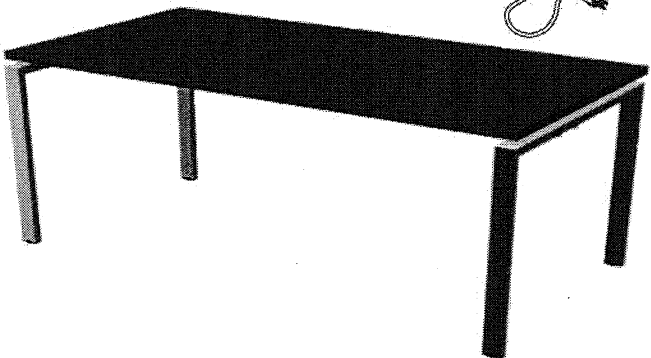
Metal



PVC Edge



Laminate



Shown without power

Power Option



Wire Management



Casters

**ITEM NO.:** T16

**ITEM:** Computer Table - 1 Person

**LOCATION:** A1 - Public Space 3.101  
A4 - Print Area 3.404

**MANUFACTURER:** First Office

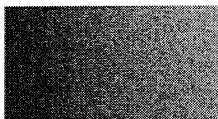
**MODEL NUMBER:** Staks Single Sided Table  
Contact Cheryl Davis with Davis Group

**DESCRIPTION:** 48"W x 36"D x 29"H  
Rectangular computer table with plastic laminate top and pvc edge. H-Leg supports with glides in luster grey finish, include necessary leg and worksurface supports. Provide vertebra cable manager in silver finish and cable basket wire manager below worksurface for equipment wire management.

**LEG FINISH:** Luster Grey MSL

**LAMINATE TOP FINISH:** Formica, Elemental Concrete, 8830-58

**EDGE FINISH:** Platinum PN2



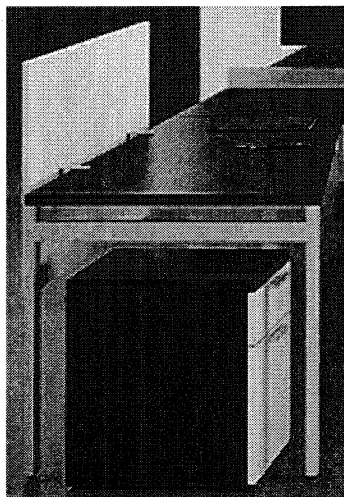
Metal Finish



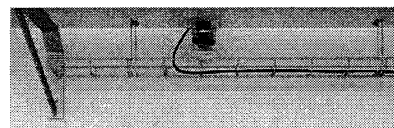
PVC Edge



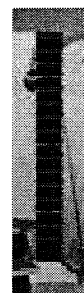
Laminate



Shown with file cabinet and privacy panel



Wire Basket Management



Vertebra Mgr

**ITEM NO.:** T17P

P: Denotes Power in Table

**ITEM:** Computer Table - 4 Person

**LOCATION:** A1 - Public Space 3.101

**MANUFACTURER:** First Office

**MODEL NUMBER:** Staks Benching Double Sided Table  
Contact Cheryl Davis with Davis Group

**DESCRIPTION:** (4) 72"W x 22"D x 29"H, Overall: 144"W x 48.18"D  
Rectangular computer table with plastic laminate top and pvc edge. H-Leg supports with glides in luster grey finish, include necessary leg and worksurface supports. Table to have surface mounted clamp-on power unit with 2 Power/2 USB (1 per side on each table top). Provide 8-Wire electrical system to provide two power duplexes per person, daisy chain tables as required for one point of connection into floor box thru vertebra cable manager in silver finish, cable basket wire manager below worksurface. 12" high frosted acrylic privacy panels mounted to tool kit.

**LEG FINISH:** Luster Grey MSL

**LAMINATE TOP FINISH:** Formica, Elemental Concrete, 8830-58

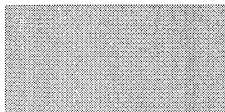
**EDGE FINISH:** Platinum PN2

**PRIVACY PANEL:** Frosted Acrylic 12"H

**OPTIONS:** Clamp-On Power unit one per table, two on each side of privacy panel. Provide a total of (4). Provide duplex receptacles and daisy chain underneath surface.



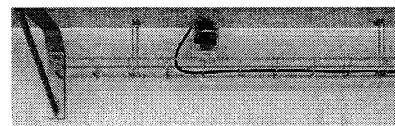
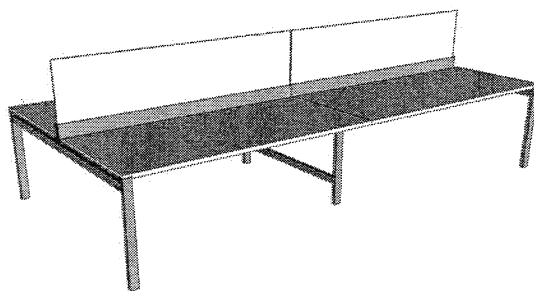
Metal Finish



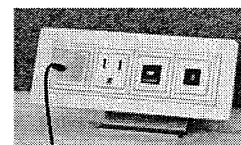
PVC Edge



Laminate



Wire Basket Management



Power on Worksurface



Privacy Panel



Vertebra Mgr

ITEM NO.: T18P

P: Denotes Power in Table

ITEM: Computer Table - 6 Person

LOCATION: A1 - Public Space 3.101

MANUFACTURER: First Office

MODEL NUMBER: Staks Benching Double Sided Table  
Contact Cheryl Davis with Davis Group

**DESCRIPTION:** (6) 36"W x 22"D x 29"H, Overall: 108"W x 48.18"D  
Rectangular computer table with plastic laminate top and pvc edge. H-Leg supports with glides in luster grey finish, include necessary leg and worksurface supports. Table to have surface mounted clamp-on power unit with 2 Power/2 USB (1 per side on each table top). Provide 8-Wire electrical system to provide two power duplexes per person, daisy chain tables as required for one point of connection into floor box thru vertebra cable manager in silver finish, cable basket wire manager below worksurface. 12" high frosted acrylic privacy panels mounted to special size tool kit.

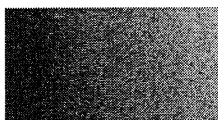
**LEG FINISH:** Luster Grey MSL

**LAMINATE TOP FINISH:** Formica, Elemental Concrete, 8830-58

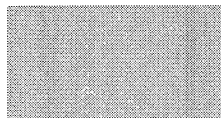
**EDGE FINISH:** Platinum PN2

**PRIVACY PANEL:** Frosted Acrylic

**OPTIONS:** Clamp-On Power unit one per table, three on each side of privacy panel. Provide a total of (6). Provide for daisy chaining. Provide duplex receptacles and daisy chain underneath surface.



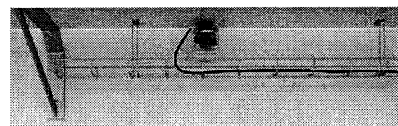
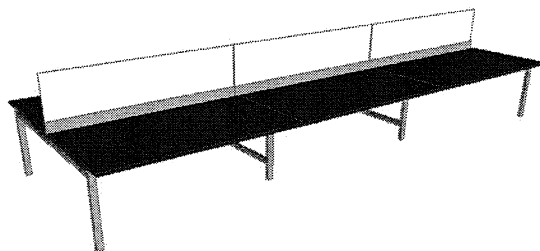
Metal Finish



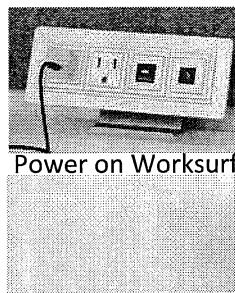
PVC Edge



Laminate

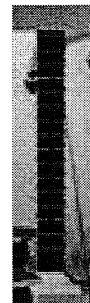


Wire Basket Management



Power on Worksurface

Privacy Panel



Vertebra Mgr



**ITEM NO.:** T33PA

P: Denotes Power in Table

**ITEM:** Computer Table - Single ADA

**LOCATION:** A1 - Instruction Room 3.114

**MANUFACTURER:** Media Technologies

**MODEL NUMBER:** WCT Workspace ADA Single Computer Table with Monitor Garage  
Table: WCT-C3037-32 (Special Height)  
Monitor Garage: FMG-23  
Power: ACUS-2P4U-120-TBD

**DESCRIPTION:** 37"L x 30"D x 32"H Garage: 23.25"W  
Plastic laminate worksurface with pvc edge and custom height steel end frames and fixed modesty panel with integral wire management channel and wire grommet. Provide (1) flipping monitor garage with black lid with keyboard tray actuated release opening and positive latch. Provide (1) Charge Up single power access, in-surface, flip up with (2) Power/(2) USB Ports and 12' cord, finish in black.

**BASE FINISH:** Silver, 809

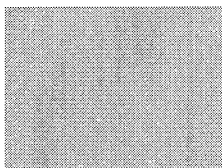
**POP-UP FINISH:** Black

**LAMINATE FINISH:** Formica, Elemental Concrete, 8830-58

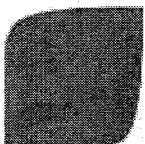
**PVC FINISH:** Dove Grey

**OPTIONS:** ACUS-2P4U-120-B, Charge Up single power access, in-surface, flip up with (2) Power/(2) USB Ports and 12' cord, finish to be black.

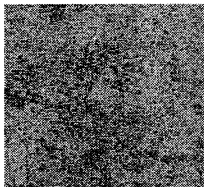
**NOTE:** Contact Bill Chollett with TAMU for final coordination on all accessory placement. (979) 862-1389



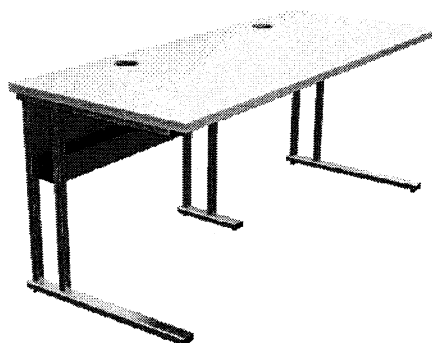
PVC Edge



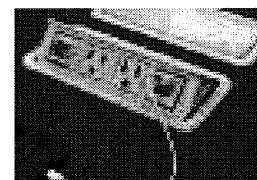
Metal Finish



Plastic Laminate



Shown as a double



Power Module



Monitor Garage

**ITEM NO.:** T34P

P: Denotes Power in Table

**ITEM:** Computer Table - Double

**LOCATION:** A1 - Instruction Room 3.114  
A4 - Instruction Room 3.405  
A4 - Instruction Room 3.405A  
A4 - Instruction Room 3.405B

**MANUFACTURER:** Media Technologies

**MODEL NUMBER:** WCT Workspace Double Computer Table with Monitor Garage  
Table: WCT-C3072-3-29  
Monitor Garage: (2) FMG-23  
Power: (2) ACUS-2P4U-120-TBD

**DESCRIPTION:** 72"L x 30"D x 29"H Garage: 23.25"W  
Plastic laminate worksurface with pvc edge and standard steel intermediate and end frames, fixed modesty panel with integral wire management channel and wire grommet. Provide (2) flipping monitor garage with black lid with keyboard tray actuated release opening and positive latch. Provide (2) Charge Up single power access, in-surface, flip up with (2) Power/(2) USB Ports and 12' cord, finish in black.

**BASE FINISH:** Silver, 809

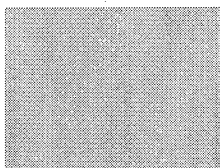
**POP-UP FINISH:** Black

**LAMINATE FINISH:** Formica, Elemental Concrete, 8830-58

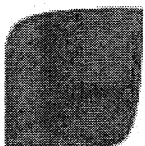
**PVC FINISH:** Dove Grey

**OPTIONS:** ACUS-2P4U-120-B, Charge Up single power access, in-surface, flip up with (2) Power/(2) USB Ports and 12' cord, finish to be black.

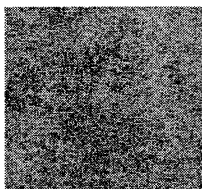
**NOTE:** Contact Bill Chollett with TAMU for final coordination on all accessory placement. (979) 862-1389



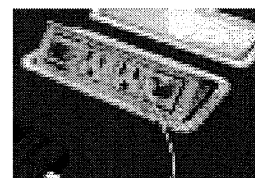
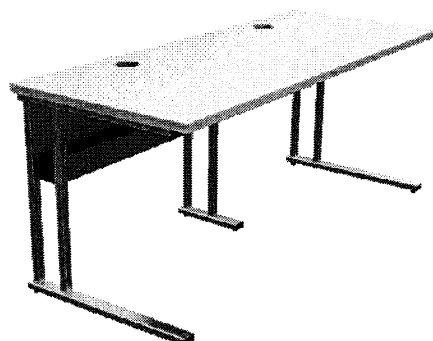
PVC Edge



Metal Finish



Plastic Laminate



Power Module



Monitor Garage

**ITEM NO.:** T35P

P: Denotes Power in Table

**ITEM:** Computer Table - Triple

**LOCATION:** A1 - Instruction Room 3.114

**MANUFACTURER:** Media Technologies

**MODEL NUMBER:** WCT Workspace Triple Computer Table with Monitor Garage  
Table: WCT-C30105-4-29  
Monitor Garage: (3) FMG-23  
Power: (3) ACUS-2P4U-120-TBD

**DESCRIPTION:** 105"L x 30"D x 29"H Garage: 23.25"W  
Plastic laminate worksurface with pvc edge and standard steel two intermediate and end frames, fixed modesty panel with integral wire management channel and wire grommet. Provide (3) flipping monitor garage with black lid with keyboard tray actuated release opening and positive latch. Provide (3) Charge Up single power access, in-surface, flip up with (2) Power/(2) USB Ports and 12' cord, finish in black.

**BASE FINISH:** Silver, 809

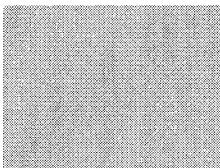
**POP-UP FINISH:** Black

**LAMINATE FINISH:** Formica, Elemental Concrete, 8830-58

**PVC FINISH:** Dove Grey

**OPTIONS:** ACUS-2P4U-120-B, Charge Up single power access, in-surface, flip up with (2) Power/(2) USB Ports and 12' cord, finish to be black.

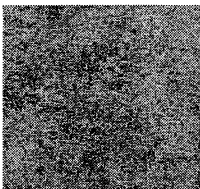
**NOTE:** Contact Bill Chollett with TAMU for final coordination on all accessory placement. (979) 862-1389



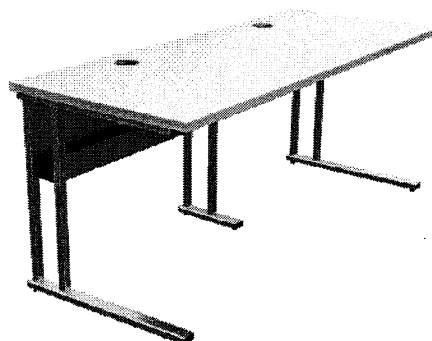
PVC Edge



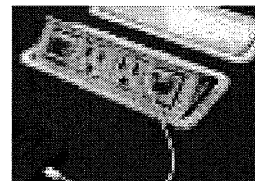
Metal Finish



Plastic Laminate



Shown as a double



Power Module



Monitor Garage

**ITEM NO.:** TR1

**ITEM:** Trash Receptacle

|                  |                              |                                |
|------------------|------------------------------|--------------------------------|
| <b>LOCATION:</b> | A1 - Ex. East Corridor 3.103 | E2 - Student Study 1.202       |
|                  | A1 - Collection 3.116        | E2 - Corridor 1.209            |
|                  | A4 - Print Area 3.404        | E2 - Student Study 1.210       |
|                  | E1 - Work Area 1.102E        | E2 - Maps/GIS Department 1.212 |

**MANUFACTURER:** Nevins

**MODEL NUMBER:** Atlas Radius Large  
F2041-2436-FMS6

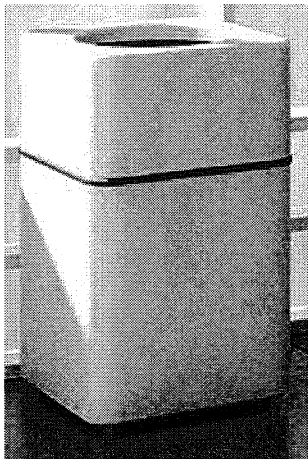
**DESCRIPTION:** 24"W x 24"D x 36"H  
Molded fiberglass two piece single radius square trash receptacle with one-piece lift off top, 17" diameter hole, rigid plastic liner and raised 1.5" from floor. Unit is fade resistant/UV Protection and waterproofed, resistant to corrosion and temperature changes. 56 gallon capacity. Provide optional custom decal in white letters, TRASH ONLY.

**FINISH:** Metallic Suede, Steel FMS6

**DECAL OPTION:** TRASH ONLY, White Letters



Finish



Decal

**ITEM NO.:** TR2

**ITEM:** Recycling Trash Receptacle

**LOCATION:** A1 - Ex. East Corridor 3.103 E2 - Student Study 1.202  
 A4 - Print Area 3.404 E2 - Corridor 1.209  
 E1 - Work Area 1.102E E2 - Student Study 1.210  
 E2 - Maps/GIS Department 1.212

**MANUFACTURER:** Nevins

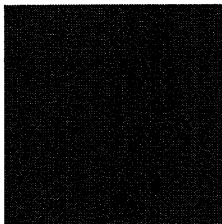
**MODEL NUMBER:** Commodore Recycling Receptacle  
 F2060-3628-FMS6

**DESCRIPTION:** 36"W x 16"D x 28"H

Molded fiberglass two piece flat lid 3-bin trash receptacle with one-piece lift off top, individual rigid plastic liner for each opening and raised 1.5" from floor. Unit is fade resistant/UV Protection and waterproofed, resistant to corrosion and temperature changes. 15 gallon capacity per opening. Provide custom optional decals in white letters, see below.

**FINISH:** Metallic Suede, Steel FMS6

**DECAL OPTION:** ALUMINUM / PLASTIC ONLY, White Letters (5" Dia. Opening, Left Facing)  
 LARGE CARDBOARD ONLY, White Letters (12" W x 2.5"D Opening, Center Facing)  
 PAPER ONLY, White Letters (9" Dia. Opening, Right Facing)



Finish



**TEXAS A&M UNIVERSITY (Texas A&M)**

**GENERAL TERMS AND CONDITIONS FOR DELIVERY, INSTALLATION, START-UP AND TRAINING**

**1. GENERAL:**

- 1.1 Texas A&M and the vendor are referred to throughout these terms and conditions. The vendor is the individual, firm, corporation or any combination thereof performing this installation for Texas A&M.
- 1.2 The bidder shall carefully examine these terms and conditions and secure from Texas A&M additional information, if necessary, that may be requisite to a clear and full understanding of the work.
- 1.3 All delivery, installation, start-up and training by the vendor shall be performed between the hours of 8:00 A.M. and 5:00 P.M., unless otherwise specified, or agreed upon, and only on working days observed by Texas A&M. These working days are usually Monday through Friday of each week.
- 1.4 The vendor shall be responsible for damage to Texas A&M's equipment and/or the workplace and its contents, by its work, negligence in work, and/or its personnel equipment. The vendor shall be responsible and liable for the safety, injury and health of its working personnel while its employees are performing delivery, installation, start-up and training.
- 1.5 The vendor shall provide all labor and equipment necessary to perform delivery, installation, start-up and training. All employees of the vendor shall be no less than 17 years of age, and shall be experienced in the type of work performed. No visitors, wives, husbands or children of the vendor's employees will be allowed in the workplace during working hours, unless they are bonafide employees of the vendor.
- 1.6 The vendor shall at all times have a minimum of one (1) English speaking employee on the job and all employees shall be well-groomed and appropriately dressed at all times when on duty.
- 1.7 Texas A&M is committed to maintaining an alcohol and drug free workplace. Possession, use or being under the influence of alcohol or controlled substances by vendor's employees while in the performance of delivery, installation, start-up and training is prohibited. Violation of this requirement shall constitute grounds for termination of this purchase. In addition, vendor employees shall observe Texas A&M's smoking policy.
- 1.8 It is the intent of Texas A&M to purchase goods, equipment, and services having the least adverse environmental impact, within the constraints of statutory purchasing requirements, departmental need's, availability, and sound economical considerations. Suggested changes and environmental enhancements for possible inclusion in future revisions of these terms and conditions are encouraged.
- 1.9 All parts not specifically mentioned in the Invitation For Bid which are necessary for the system to be complete and ready for operation, or which are normally furnished as standard equipment shall be furnished by the successful bidder. All parts shall conform in strength, quality and workmanship to the accepted Standard of the Industry.
- 1.10 The system provided shall meet or exceed all Federal and State of Texas Safety, Health, Lighting, and Noise Regulations, and Standards in effect and applicable to equipment furnished at the time of manufacture.

**2. ABANDONMENT OR DEFAULT:**

- 2.1 A vendor who abandons or defaults the delivery, installation, start-up and training work and causes this purchase to be rebid will not be considered for future bids.
- 2.2 This purchase will be void if sold, transferred or assigned to another company without written approval from Texas A&M. Written notification of changes to company name, address, telephone number, etc. should be given to Texas A&M as soon as possible but not later than 30 days from date of change.

**3. RESPONSIBILITY FOR DAMAGE CLAIMS:**

- 3.1 The vendor agrees to indemnify and save harmless Texas A&M, its agents and employees from all suites, action or claims and from all liability and damages for any and all injuries or damages sustained by any person or property in consequence of any neglect in the performance of the delivery, installation, start-up and training by the vendor and from any claims or amounts arising or recovered under the "Workers Compensation Laws", Chapter 101, VTCA, Civil Practice and Remedies Code, or any other laws. Vendor further so indemnify and be responsible for all damages or injury from any act, omission, neglect or misconduct of the vendor, his/her agent and employees, in the manner or method of executing the work; or from failure to properly execute the work; or from defective work or materials. Vendor shall not be released from these responsibilities until all claims have been settled and suitable evidence to that effect furnished to Texas A&M.

4. APPLICABLE LAWS:

4.1 The laws of the State of Texas shall govern this purchase, delivery, installation, start-up and training.

5. COMPLIANCE WITH LAWS:

5.1 The vendor shall comply with all Federal, State and local laws, statutes, ordinances, rules and regulations, and the orders and decrees of any court or administrative bodies or tribunals in any matter affecting the performance of this delivery, installation, start-up and training including without limitation, worker's compensation laws, minimum and maximum salary and wage statutes and regulations, and licensing laws and regulations. When required, the vendor shall furnish Texas A&M with satisfactory proof of its compliance therewith.

6. COMPLIANCE:

6.1 Delivery, installation, start-up and training shall be done in accordance with industry standards and any specifications listed on the Invitation For Bid.

7. INSURANCE: Where the Seller is required to provide labor for work on the premises, or for the delivery setting or installation of any furniture, appliance or equipment, he and his subcontractors shall carry adequate Property Damage and Public Liability Insurance, also Workmen's Compensation and Employer's Liability Insurance in statutory amounts. Upon request, he shall furnish the Owner a certificate of compliance before starting work on the job. Amounts of insurance required shall be per schedule below:

[Vendor] shall obtain and maintain, for the duration of this Agreement or longer, the minimum insurance coverage set forth below. With the exception of Professional Liability (E&O), all coverage shall be written on an occurrence basis. All coverage shall be underwritten by companies authorized to do business in the State of Texas or eligible surplus lines insurers operating in accordance with the Texas Insurance Code and have a financial strength rating of A- or better and a financial strength rating of VII or better as measured by A.M. Best Company or otherwise acceptable to Texas A&M University. By requiring such minimum insurance, the Owner shall not be deemed or construed to have assessed the risk that may be applicable to [Vendor] under this Agreement. [Vendor] shall assess its own risks and if it deems appropriate and/or prudent, maintain higher limits and/or broader coverage. [Vendor] is not relieved of any liability or other obligations assumed pursuant to this Agreement by reason of its failure to obtain or maintain insurance in sufficient amounts, duration, or types. No policy will be canceled without unconditional written notice to Texas A&M University at least ten days before the effective date of the cancellation.

Insurance:

| Coverage                         | Limit                            |
|----------------------------------|----------------------------------|
| <b>A. Worker's Compensation</b>  |                                  |
| Statutory Benefits (Coverage A)  | Statutory                        |
| Employers Liability (Coverage B) | \$1,000,000 Each Accident        |
|                                  | \$1,000,000 Disease/Employee     |
|                                  | \$1,000,000 Disease/Policy Limit |

Workers' Compensation policy must include under Item 3.A. on the information page of the workers' compensation policy the state in which work is to be performed for Texas A&M University. Workers' compensation insurance is required, and no "alternative" forms of insurance will be permitted

|  |             |
|--|-------------|
| <b>B. Automobile Liability</b>   |             |
| Business Auto Liability Insurance covering all owned, non-owned or hired automobiles, with limits of not less than \$1,000,000 Single Limit of liability per accident for Bodily Injury and Property Damage; |             |
| <b>C. Commercial General Liability</b>   |             |
| Each Occurrence Limit  | \$1,000,000 |
| General Aggregate Limit  | \$2,000,000 |
| Products / Completed Operations  | \$1,000,000 |
| Personal / Advertising Injury  | \$1,000,000 |
| Damage to rented Premises  | \$300,000   |
| Medical Payments   | \$5,000     |

The required commercial general liability policy will be issued on a form that insures [Vendor's] or its subcontractors' liability for bodily injury (including death), property damage, personal and advertising injury assumed under the terms of this Agreement.

#### Additional Endorsements

The Auto and Commercial General Liability Policies shall name the Texas A&M University System Board of Regents for and on behalf of The Texas A&M University System and the Texas A&M University as additional insured's.

**D. [Vendor] will deliver to Texas A&M University:**

Evidence of insurance on a Texas Department of Insurance approved certificate form verifying the existence and actual limits of all insurance after the execution and delivery of this Agreement and prior to the performance of any services by [Vendor] under this Agreement. Additional evidence of insurance will be provided on a Texas Department of Insurance approved certificate form verifying the continued existence of all required insurance no later than thirty (30) days after each annual insurance policy renewal.

All insurance policies, with the exception of worker's compensation and employer's liability will be endorsed and name The Board of Regents for and on behalf of The Texas A&M University System, The Texas A&M University System and Texas A&M University as Additional Insureds up to the actual liability limits of the policies maintained by [Vendor]. Commercial General Liability and Business Auto Liability will be endorsed to provide primary and non-contributory coverage. The Commercial General Liability Additional Insured endorsement will include on-going and completed operations and will be submitted with the Certificates of Insurance.

All insurance policies will be endorsed to provide a waiver of subrogation in favor of The Board of Regents of The Texas A&M University System, The Texas A&M University System and Texas A&M University. No policy will be canceled without unconditional written notice to Texas A&M University at least ten days before the effective date of the cancellation. All insurance policies will be endorsed to require the insurance carrier providing coverage to send notice to Texas A&M University ten (10) days prior to the effective date of cancellation, material change, or non-renewal relating to any insurance policy required in this section.

Any deductible or self-insured retention must be declared to and approved by Texas A&M University prior to the performance of any services by [Vendor] under this Agreement. [Vendor] is responsible to pay any deductible or self-insured retention for any loss. All deductibles and self-insured retentions will be shown on the Certificates of Insurance.

Certificates of Insurance and Additional Insured Endorsements as required by this Agreement will be mailed, faxed, or emailed to the following Texas A&M University contact:

Name:

Address:

Facsimile Number:

Email Address:

The insurance coverage required by this Agreement will be kept in force until all services have been fully performed and accepted by Texas A&M University in writing.